

HOUSEHOLD INSECTICIDES

PRIVATE LABEL
PRODUCT SOLUTIONS

Kwizda

Agro | Biocides

KWIZDA AGRO | BIOCIDES

COMPETENCE IN PEST CONTROL

For over 25 years, Kwizda Agro | Biocides has been a pioneer in the production of high-quality and complex biocidal products for non-professional and professional use. Our unique formulation technology is internationally known for high efficacy and environmental compatibility.

AT A GLANCE



Founded
in **1926**



2
production plants



Employees:
around 450



Headquarters in
Austria

STATE-OF-THE-ART PRODUCTION FACILITIES FOR YOUR PRODUCTS

Kwizda Agro's tolling is a mainstay of our company. Our clear goal is to be a reliable partner for the formulation of complex and high-quality biocidal product solutions within our industry. Thanks to our innovation expertise and the desire to make continuous improvements, we develop and manufacture innovative and targeted product solutions and products for our customers. Our production plants are located in Leobendorf, Austria as well as Val-d'izé, France and operate under the highest environmental and safety standards, tailoring products to your needs.



LEOBENDORF

5 FLUID BED GRANULATORS
4 UNITS FOR LIQUID FORMULATION
6 PACKAGING LINES



VAL-D'IZÉ

ASSEMBLY AND PACKAGING
PRODUCTION OF 500 TONS/YEAR

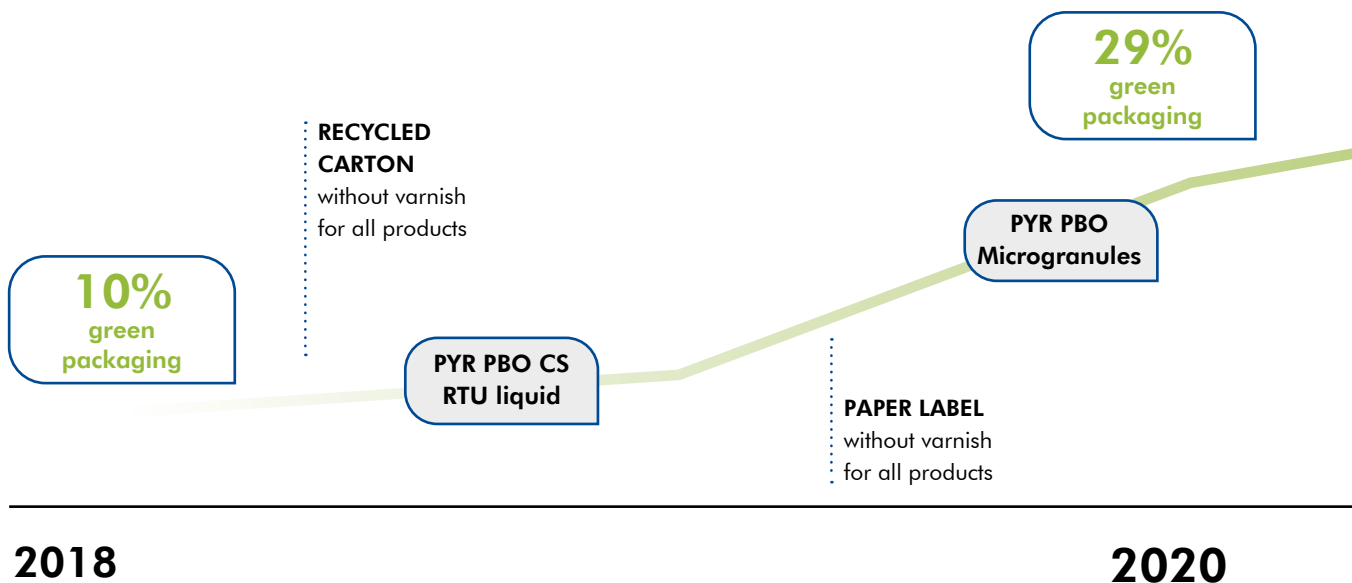
COMPETENCE IN PEST CONTROL

- Private Label production for leading brands in household insecticides
- More than 40 years of experience in complex formulation development
- Leading position in natural formulations and sustainable packaging
- More than 50 biocidal product solutions
- Entomological expertise with own insectarium and global network

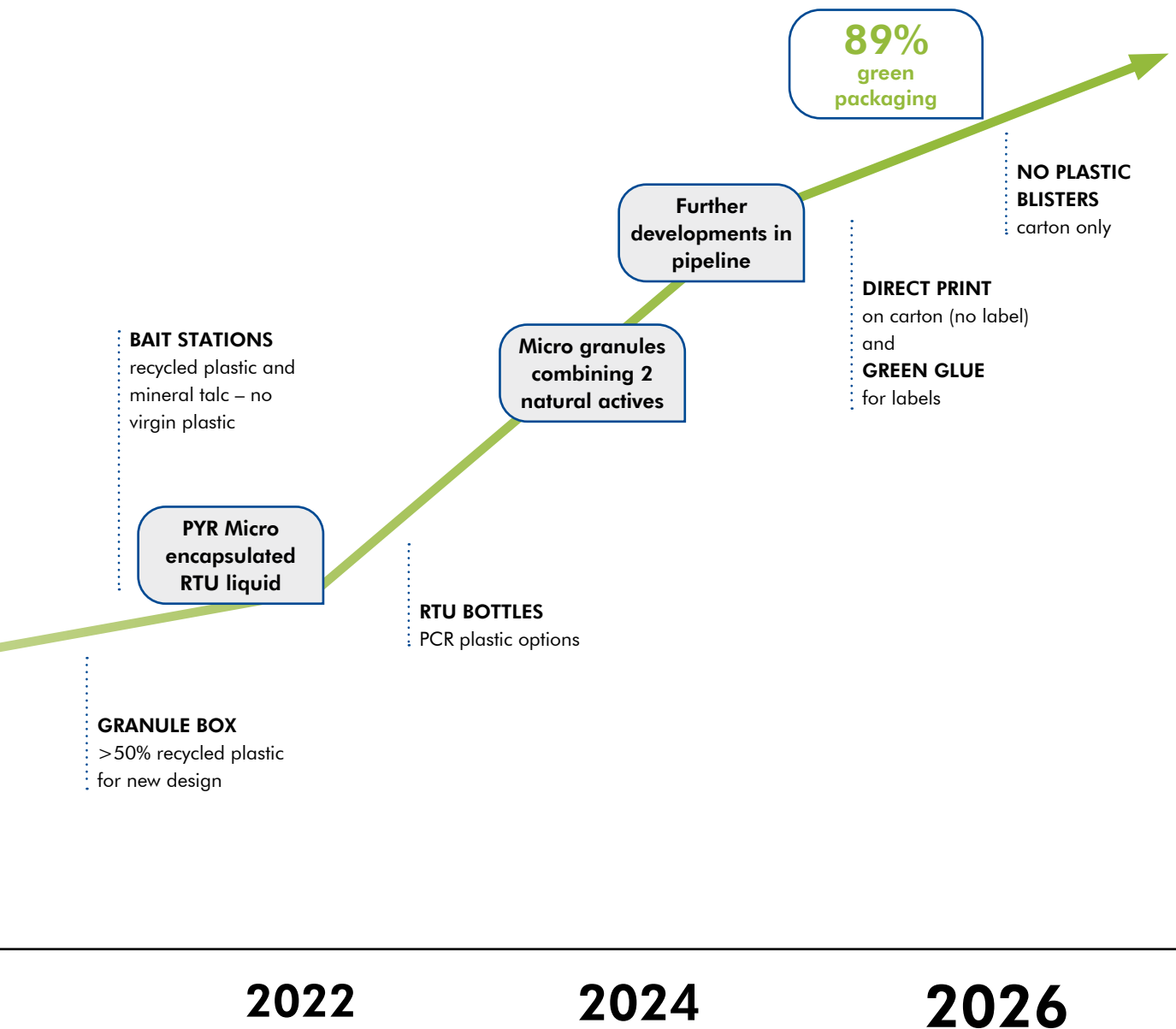
ROAD TO SUSTAINABLE PACKAGING

DEVELOPMENT OF GREEN PACKAGING

% of total packaging per sold SKUs (> 15 million packaging units)



- More than 120 different packaging solutions
- Regulatory safety: more than 500 registrations and 14 authorizations on the way
- 2 production sites in Central Europe and 450 employees
- Sales in more than 40 countries to more than 200 customers



NATURAL CRAWLING INSECT CONTROL - PYRTEC® GRANULES



UNIQUE COMBINATION OF 2 NATURAL-BASED ACTIVE INGREDIENTS

- **Pure natural origin active ingredients:**
Natural Pyrethrum extracted from the dried flower heads of *Chrysanthemum cinerariifolium* acts on the nervous system. Diatomaceous earth acts as mechanical disruptor of the insect's cuticula.
- **Safe use:**
Micro granular technology with no dust emission for indoor usage. Zero risk of insecticidal contamination of the surroundings. Reduced risk of dust inhalation during and after application compared to powders.
- **High performance formulation:**
The combination of two modes of action means the product acts fast, has a long-lasting effect and it reduces the risk of cross-resistance.
- **Indoor and outdoor application:**
Protection for up to 3 months.
No synthetic active ingredients.
No synthetic synergist (PBO) or other synthetic active ingredients in the formulation.
- **Easy-to-use:**
Specially designed for the amateur market, application by scattering.
- **BPR submitted formulation:**
Secured long-term sales.



AGAINST

- **Ants:**
Black and pharaoh ant
- **Roaches:**
American, Suppella and German cockroach
- **Crawling:**
Cat flea and tick

COMPOSITION

- *Chrysanthemum cinerariaefolium* ext.:
0.25g/kg – PT 18
- Silicon dioxide Kieselguhr (Diatomaceous earth):
6.25g/kg – PT 18
- Contains a bittering agent to discourage accidental ingestion.

MULTI INSECT CONTROL - PYRTEC® SPRAY



FIRST PLANT-BASED PRODUCT WITH LONG-LASTING EFFECT

- **Long-lasting effect - 1 month:**
The advanced microencapsulation technology protects the active ingredient and allows a controlled release over time.
- **Effective flower-based active ingredient:**
Controls a wide range of crawling and flying pests.
- **Water-based formulation:**
No smell, no stain, non-corrosive, non-flammable
Contains 98% freshwater.
- **Flower-based active ingredient:**
Chrysanthemum extracted by supercritical CO₂
(Also used in the food industry).
- **Powerful booster mix:**
Formulation includes a natural booster that weakens the cuticle protection for an increased uptake of the active substance. No PBO added.
- **BPR submitted formulation**
Secured long-term sales.



AGAINST

- **Mosquitoes:**
Common and tiger mosquito
- **Flying:**
House fly and wasps
- **Roaches:**
American, brownbanded and oriental cockroach
- **Ants:**
Black garden ant and pharaoh ant
- **Crawling:**
Silverfish, spider and stink bugs

COMPOSITION

- Pure chrysanthemum *cinerariaefolium* extract from open and mature flowers of *Tanacetum cinerariifolium* obtained with supercritical carbon dioxide: 0.5g/l - PT18.
- Contains a bittering agent to prevent accidental ingestion.



PLANT-BASED ANT CONTROL - PYRTEC® GEL

PLANT-BASED GEL FOR EFFECTIVE ANT CONTROL

- **Pure natural origin active ingredients:**
Natural pyrethrum made from the dried flower heads of *Chrysanthemum cinerariifolium* acts on nervous system. No PBO added.
- **Unique combination of palatable ingredients:**
Specially designed mix of ingredients to ensure the best palatability and attractiveness. The product keeps its palatability for a long time after application.
- **Lipolock unique technology:**
Pyrethrum is highly sensitive to environmental stress. LipoLock shields the pyrethrum preventing rapid degradation and removing any repellent effect.
- **Powerful killing effect:**
Thanks to the combination of palatability and fast action, the ant infestation is rapidly eradicated.



AGAINST

- **Ants:**
Black garden ant

COMPOSITION

- *Chrysanthemum cinerariifolium* ext.: 0.5 g/kg – PT 18
- Contains a bittering agent to discourage accidental ingestion

CRAWLING INSECT CONTROL - GRANULES

PYR 0.25 PBO 1.25 MG

PLANT-BASED ACTIVE INGREDIENT WITH HIGH EFFICACY

- **High performance formulation:**
Contamination of ants, roaches and fleas via contact (static properties of micro granules) and ingestion (natural grooming behavior of insects) efficacious up to 12 weeks.
- **Pure natural origin active ingredient:**
Natural Pyrethrum extracted from the dried flower heads of *Chrysanthemum cinerariifolium*.
- **Zero Dust Emission:**
Micro granular technology with no dust emission for indoor usage. Reduced risk of insecticidal contamination of the surroundings.
- **Easy-to-use:**
Specially designed for the non-professional market
Application by scattering, watering or spraying.
- **BPR submitted formulation:**
Secured long-term sales.



AGAINST

- **Ants:**
Argentine, black garden ant and pharaoh ant
- **Roaches:**
American, brownbanded, german and oriental cockroach
- **Crawling:**
Cat flea and tick

COMPOSITION

- Chrysanthemum cinerariaefolium ext.: 0.25g/kg – PT 18
- Piperonyl butoxide: 1.25g/kg – PT 18
- Contains a bittering agent to discourage accidental ingestion.

CRAWLING INSECTS CONTROL - GRANULES

AMP 2 MG

STRONG ALTERNATIVE TO DUSTY POWDERS

- **High performance formulation:**
Contamination of ants and roaches via contact (static properties of micro granules) and ingestion (natural grooming behavior of insects).
- **Effective chain effect:**
Slow killing properties of active ingredient allow ants to spread the bait throughout entire colony (mouth-to-mouth-feeding via "social stomach").
- **Safe use - no dust emissions:**
Micro granular technology without dust emission, strong alternative to powders.
- **High palatability:**
Sugar-based formulation attracts the crawling insects on the bait.
- **Flexible application:**
Application by scattering, watering or spraying for indoor and outdoor use.
- **BPR submitted formulation:**
Secured long-term sales.



AGAINST

- **Ants:**
Black garden ant
- **Roaches:**
American, german and oriental cockroach
- **Crawling:**
Silverfish

MULTI INSECT CONTROL - LIQUID SPRAY

AMP 2 CL

98% FRESHWATER AND HIGH EFFICACY

- **Easy-to-use:**
Household friendly, pet friendly (can be used in presence of pets) can be applied in and around the house.
- **Multi-target control:**
Very wide spectrum of efficacy on crawling and flying insects (tested on 24 insects) via surface treatment.
- **Water-based formulation:**
No smell, no stain, non corrosive, non-flammable and contains 98% freshwater.
- **Long-lasting effect:**
Long-lasting properties with efficacy for up to 3 months.
- **BPR submitted formulation:**
Secured long-term sales.

AGAINST

- **Mosquitoes:**
Common, tiger, tropical and yellow fever mosquito
- **Flying:**
House, fruit and stable fly, wasp
- **Roach:**
American, german and oriental cockroach
- **Ants:**
Argentine, black garden ant and pharaoh ant
- **Crawling:**
Bed bug, carpet beetle, cat flea, earwig, house spider, itch mite



ROACH COLONY CONTROL - BAIT

AMP 9/10 RB

BEST PALATABILITY ON THE MARKET - 5 ATTRACTANTS

- **High consumption bait:**
A single bait station feeds up to 300 cockroaches leading to a massive cascade effect.
- **Long-lasting effect:**
Long-lasting properties with efficacy for up to 3 months.
- **Colony control - chain effect:**
Slow-acting active ingredient allows contaminated roaches to return to their nest site for unmatched cascade effect.
- **Combination of palatable active ingredients:**
Unique mix of 5 highly palatable attractants to cover the food preferences of all common household roaches.
- **BPR submitted formulation:**
Secured long-term sales.

AGAINST

- **Roaches:**
American, German and Oriental cockroach
- **Crawling:**
Silverfish



ANT CONTROL - BAIT

AMP 1 RB

ANT BAIT FOR FULL COLONY CONTROL INCL. QUEEN

- **Full infestation control:**
Kills the entire colony incl. queen, larvae and workers of all common household ants.
- **Effective chain effect:**
Slow killing properties of active ingredient allow ants to spread the bait throughout entire colony (mouth-to-mouth feeding "social stomach").
- **Excellent palatability:**
Combination of natural food sources (fructose- and water-based gel) is highly appealing for ants.
- **BPR submitted formulation:**
Secured long-term sales.

AGAINST

- **Ants:**
Argentine, black garden, erratic and pavement ant



FLY CONTROL - BAIT

AMP 5 GB

PROFESSIONAL FLY CONTROL PRODUCT FOR AMATEUR USE

- **Long-lasting protection:**

The bait remains active for up to 3 months. Protection for the entire fly season (spring – summer).

- **High performance:**

Professional product for household insecticide usage.

Contains 3 attractants for flies:

Sugar, Cheese and Sexual Pheromone (Z-9-Tricosene)

Powerful formulation designed for fast killing effect and full control.

- **Safe use - no risk of human exposure:**

Granules are protected inside the box, not possible to open the box. Consumers and pets unable to be exposed to granules.

- **BPR submitted formulation:**

Secured long-term sales.



AGAINST

- **Flying:**

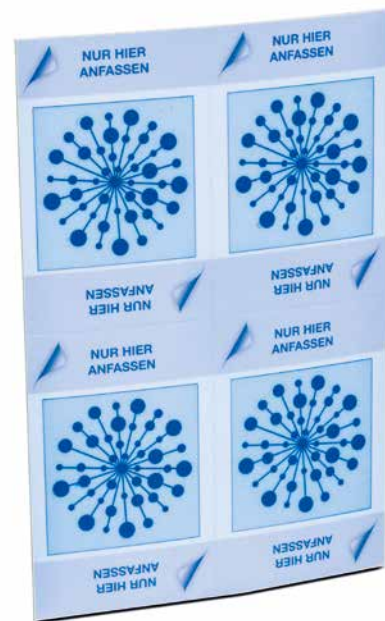
Blow and house fly

FLY CONTROL - STICKER

AMP 9 PA

DISCREET, ODORLESS WITH SAFE USE DESIGN

- **Strong and long-lasting effect:**
Short contact sufficient to contaminate and kill the fly.
Full efficacy throughout the summer (up to 6 months).
- **Highly attractive for flies:**
Natural palatable food source combined to a pattern of colours specifically designed for flies.
- **Discreet:**
Flies do not stick to the sticker, odorless and neutral design, no stains.
- **Safe and easy to use:**
Specially designed with no risk of insecticidal contamination of the treated area.
- **BPR submitted formulation:**
Secured long-term sales.



customized design possible

AGAINST

- **Flying:**
House fly

MULTI INSECT CONTROL - FUMIGATOR

FUMIGATOR INSECTICIDE VOLUME TREATMENT STRONG HYDROREACTIVE FUMIGATOR

- **Innovation:**
Hydroreactive technology: no propellant gas, no fire, no wick, no risk of explosion.
- **Formula:**
The exothermic reaction diffuses a dry fog which contains the active ingredient to penetrate every crack and crevice. Eradicates insects wherever they harbor.
- **Versatility:**
High efficacy on most indoor crawling and flying insects.
- **Action:**
Immediate knock down effect.
- **Lethal effect:**
2-4 hours for a complete killing.
- **BPR submission in preparation:**
For long-term sales.



AGAINST

- **Flying:**
Clothes and flour moth, house and stable fly, wasps, yellow fever, tiger and common mosquito
- **Crawling:**
Bed bug, black garden ant and pharaoh ant, carpet beetle, cat flea, dark litter and flour beetle, house dust mites and spider, american, german and oriental cockroaches

MULTI INSECT - LIQUID SPRAY

AMP 2 D-TETRA 1 PBO 4 CL

FORMULATION COMBINING 3 STRONG ACTIVE INGREDIENTS

- **Lethal effect:**
Effective and fast killing effect.
- **Long-lasting effect:**
Up to 3 months.
- **Versatility:**
High efficacy on a broad spectrum of crawling and flying insects.
- **Premium formula:**
Combines several active substances, limits the development of resistance in many insects.
- **Use:**
In and around buildings as a curative or preventive treatment.

AGAINST

- **Mosquitoes:**
House, tiger and yellow fever mosquito
- **Flying:**
Flour and cloth moth, house fly, hornet, wasp
- **Cockroaches:**
American, german and oriental cockroach
- **Crawling:**
Bed bug, black garden ant, cat flea, dark litter and flour beetle, house dust, itch and red poultry mite, house spider



OUR LOCATIONS



England

France

Spain



In-house biologicals



Plant protection



Biocides



Tolling

Germany



Austria



Hungary



Italy

Romania



BIOCIDES



[Kwizda-biocides.com](https://www.kwizda-biocides.com)



[https://www.linkedin.com/
company/kwizda-agro-biocides/](https://www.linkedin.com/company/kwizda-agro-biocides/)

KWIZDA AGRO GMBH

Universitätsring 6
1010 Vienna

Kwizda

Agro | Biocides

WWW.KWIZDA-BIOCIDES.COM

Use biocides safely. Always read the label and product information before use.