

BIOCIDAL PRODUCT SOLUTIONS

FOR
PROFESSIONAL
USERS



Kwizda

Agro | Biocides





COMPETENCE IN PEST CONTROL

SINCE 1926, KWIZDA AGRO I
BIOCIDES HAS BEEN
DEVELOPING, FORMULATING,
MANUFACTURING AND
REGISTERING BIOCIDAL
PRODUCT SOLUTIONS FOR
PROFESSIONAL AND AMATEUR
USE ON AN INTERNATIONAL
LEVEL

KWIZDA AGRO. IN SAFETY WE GROW.

For over 25 years, Kwizda Agro | Biocides has been a pioneer in the production of high-quality biocides for non-professional and professional use. Our unique product solutions satisfy people around the world due to their high effectiveness.

AT A GLANCE



Founded
in **1926**



1
production plant



Employees:
around 450



Headquarters in
Austria

STATE-OF-THE-ART PRODUCTION FACILITY FOR YOUR PRODUCTS

Kwizda Agro's tolling is a mainstay of our company. Our clear goal is to be a reliable partner for the formulation of complex and high-quality biocidal product solutions within our industry. Thanks to our innovation expertise and the desire to make continuous improvements, we develop and manufacture innovative and targeted product solutions for our customers. Our production plant is located in Leobendorf, Austria, and operates under the highest environmental and safety standards, tailoring products to your needs.



LEOBENDORF

6 FLUID BED GRANULATORS

5 UNITS FOR LIQUID FORMULATION

6 PACKAGING LINES

OUR OFFER

RESEARCH

- Acetamiprid exclusivity (EU 27) and applicant of new active ingredients
- Entomological expertise with own insectarium and global network
- New green portfolio

DEVELOPMENT

- 25 years Kwizda Agro | Biocides: more than 50 biocidal product solutions
- 40 years agrochemical: high-end expertise in complex agro-chemical product solutions

PRODUCT DESIGN

- Highly experienced in BPR applications and application concepts
- Packaging development: >120 packaging alternatives
- Market positioning experience on an international level

REGULATORY

- High BPR expertise: 14 dossiers based on 8 active ingredients submitted
- 500 product registrations
- 700 international labels

PRODUCTION

- Outstanding quality performance
- Fast response and short lead time
- Multiple packaging lines
- Own production facilities

SALES

- 25 years of market experience
- More than 200 customers
- Sales in over 40 countries
- Full technical support



TABLE OF CONTENTS

MULTI-INSECT CONTROL

- 06 Fumigator
- 08 Cyper 90 CS
- 10 AMP 50 Tetra 25 PBO 100 EC

ROACH CONTROL

- 12 AMP 20 RB

ANT CONTROL

- 14 AMP 1 RB
- 16 DMA 57 RB

CRAWLING CONTROL

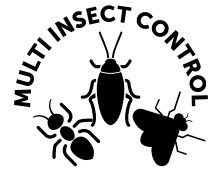
- 18 AMP 2 MG

FLY CONTROL

- 20 AMP 100 SG
- 22 AMP 5 GB

FUMIGATOR

THE SAFER APPLICATION FOR ALL INDOOR INSECTS



COMPOSITION

- Cyphenothrin: 72 g/kg (CAS No. 39515-40-7)

FORMULATION

- FU (hydro-reactive fumigant)

BIOCIDAL PRODUCT

- Insecticide PT 18

ONSET OF BIOCIDAL EFFECT

- Immediate knockdown effect.

RESIDUAL EFFECT

- No residual effect.

PRODUCT BENEFITS

- **BPR submitted formulation:**
Secured sales until at least 2027.
- **Control of more than 25 species:**
Specific control in residential and commercial areas, farms and industries. Effective against all indoor insects - the fast answer for thorough pest control.
- **RTU easy indoor treatment:**
Hydroreactive fumigant with no fire or manpower needed - 2-4 hours for complete killing.
- **Safe use for the PCO:**
Delayed onset of action leaves time to exit the room. No need for propellant gas or wick and no risk of explosion.
- **Eradication of insects wherever they harbor:**
The exothermic reaction diffuses a dry fog which contains the active ingredient to penetrate every crack and crevice.



TARGETS

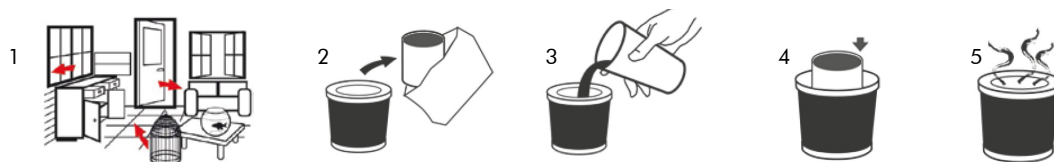
- **Flying insects:** Yellow fever mosquito (*Aedes aegypti*), Asian tiger mosquito (*Aedes albopictus*), Mosquito (*Culex quinquefasciatus*), House fly (*Musca domestica*), Stable fly (*Stomoxys calcitrans*), Clothes moth (*Tineola bisselliella*), Wasp (*Vespa germanica*)
- **Crawling Insects:** Bed bug (*Cimex lectularius*), Oriental cockroach (*Blattella orientalis*), German cockroach (*Blattella germanica*), American cockroach (*Periplaneta americana*), Black ant (*Lasius niger*), Pharaoh ant (*Monomorium pharaonis*), Silverfish (*Lepisma saccharina*), Carpet beetle (*Anthrenus flavipes*), Cat flea (*Ctenocephalides felis*), Skin/ hide beetle (*Dermestes maculatus*), House spider (*Pholcus phalangioides*)
- **Food mites and insects:** Mediterranean flour moth (*Ephesia kuehniella*), Flour moth (*Plodia interpunctella*), Small mealworm (*Alphitobius diaperinus*), Poultry red mite (*Dermanyssus gallinae*), Yellow mealworm beetle (*Tenebrio molitor*)
- **Other pests:** American house dust mite (*Dermatophagoides farinae*), European house dust mite (*Dermatophagoides pteronyssinus*)

USE

- For use in commercial, institutional, residential, hotel, industrial, waste storage areas. Curative treatment.

INSTRUCTIONS FOR USE

- Remove animals (including fish), plants, food and feed from the area to be treated. Remove or cover electronic devices and metal subjected to oxidation (copper, silver, brass, etc.).
- Close doors and windows opening on the outside. Open doors, cupboards and drawers inside the premises. If possible, block air vents for better product efficiency.
- Place the plastic cup in the middle of the area, pour in some water up to the indicated level, tear off the aluminum envelope containing the tin can and place the can with the red face upward.
- The mist is released after a 30 second minimum delay. For large areas, use the appropriate quantity of fumigators and first activate those that are the farthest from the exit.
- Don't enter the premises during the fumigation process.
- Let the fumigator operate in the closed area for a minimum of 2 hours - 4 hours for best results.
- When re-entering the premises, open doors and windows wide to allow the area to be ventilated properly.
- Leave the premises (free of any people or animals) and air out the treated area for at least 10 to 15 minutes. The premises can then be used again.



RECOMMENDED DOSE

■ Crawling insects and mites:

- 1 fumigator of 10g for 25m² or 65m³
- 1 fumigator of 20g for 50m² or 130m³
- 1 fumigator of 100g for 250m² or 650m³

■ Flying insects:

- 1 fumigator of 10g for 50m² or 130m³
- 1 fumigator of 20g for 100m² or 260m³
- 1 fumigator of 100g for 500m² or 1300m³

TARGETS	EFFICACY TESTS		
	Efficacy in ("Guideline recommendation >90% of reduction")	Mortality in 1/4 H	Non-recovery/ Mortality in 24 H
House mosquito (<i>Culex quinquefasciatus</i>)	4h	100%	100%
Asian mosquito (<i>Aedes aegypti</i>)	1h	100%	100%
Tiger mosquito (<i>Aedes albopictus</i>)	1h	100%	100%
Housefly (<i>Musca domestica</i>)	4h	100%	100%
Clothes moth (<i>Tineola bisselliella</i>)	1h	100%	100%
Common wasp (<i>Vespa germanica</i>)	4h	100%	100%
Carpet beetle (<i>Anthrenus flavipes</i>)	1h	100%	100%
Oriental cockroach (<i>Blatta orientalis</i>)	4h	100%	100%
German cockroach (<i>Blattella germanica</i>)	4h	100%	100%
American cockroach (<i>Periplaneta americana</i>)	1h	100%	100%
Bed bug (<i>Cimex lectularius</i>) (larvae and adults)	4h	100%	100%
Flea (<i>Ctenocephalides felis</i>)	4h	100%	100%
Black garden ant (<i>Lasius niger</i>)	4h	100%	100%
Pharaoh ant (<i>Monomorium pharaonis</i>)	1h	100%	100%
Silverfish (<i>Lepisma saccharina</i>)	1h	100%	100%
House spider (<i>Pholcus phalangioides</i>)	4h	100%	100%
Dust mite (<i>Dermatophagoides farina</i>)	24h	100%	100%
Small mealworm (<i>Alphitobius diaperinus</i>)	1h	100%	100%

CYPER 90 CS

EFFECTIVE ACTIVE INGREDIENT AND UNIQUE ENCAPSULATING TECHNOLOGY FOR MULTITARGET CONTROL



COMPOSITION

- 90g/l Cypermethrin (CAS n°52315-07-8)

FORMULATION

- Water-based capsule suspension (> 67%) .

BIOCIDAL PRODUCT

- Insecticide PT 18

ONSET OF BIOCIDAL EFFECT

- Few minutes after application.

RESIDUAL EFFECT

- Up to 6 months after application.

PRODUCT BENEFITS

■ BPR submitted formulation:

Secured sales until at least 2031.

■ Unique microencapsulation technology:

The top performances are the result of a combination of a well-known insecticide and unique encapsulating technology, that of MicroCap Protect:

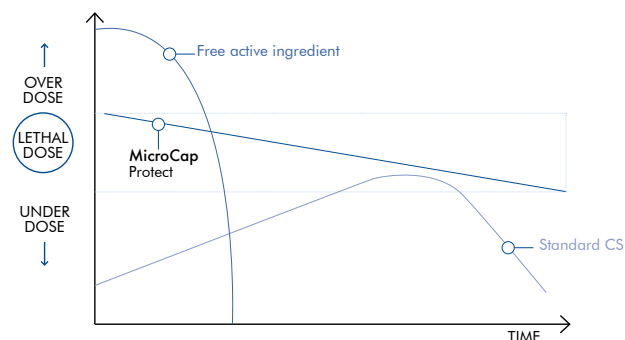
- Long lasting killing/knockdown effect
- Controlled release of the active ingredient

■ Multi-target protection system:

Control different flying and crawling species, for indoor and outdoor protection.

■ Colony control - chain effect:

The contaminated insect goes back to the harborage and poisons the full colony due to the advanced microencapsulation technology.



TARGETS

- **Flying insects:** yellow fever mosquito (*Aedes aegypti*), Asian tiger mosquito (*Aedes albopictus*), tropical mosquito (*Anopheles gambiae*), house mosquito (*Culex quinquefasciatus*), Mediterranean flour moth (*Ephestia kuehniella*), flour moth (*Plodia interpunctella*), house fly (*Musca domestica*), stable fly (*Stomoxys calcitrans*), clothes moth (*Tineola bisselliella*)
- **Crawling Insects:** American cockroach (*Periplaneta americana*), Oriental cockroach (*Blatta orientalis*), German cockroach (*Blattella germanica*), bed bug adult (*Cimex lectularius*), cat flea (*Ctenocephalides felis*), house spider (*Tegenaria domestica*), European house dust mite (*Dermatophagoides pteronyssinus*)
- **Storage and other pests:** foreign grain beetle (*Ahasverus advena*), dark litter beetle (*Alphitobius diaperinus*), poultry red mite (*Dermanyssus gallinae*), hide beetle (*Dermestes maculatus*), tick (*Ixodes ricinus*), tobacco beetle (*Lasioderma serricornis*), saw toothed beetle (*Oryzaephilus surinamensis*), lesser grain borer (*Rhizopertha dominica*), wheat weevil (*Sitophilus granarius*), rice weevil (*Sitophilus oryzae*), drugstore beetle (*Stegobium paniceum*), yellow mealworm beetle (*Tenebrio molitor*), red flour beetle (*Tribolium castaneum*), flour beetle (*Tribolium confusum*), khapra beetle adult (*Trogoderma granarium*)

USE

- For use in commercial, institutional, residential, hotel, industrial and waste storage areas. Curative treatment.

INSTRUCTIONS FOR USE

Apply the product on an insect's path and/or in nooks, crannies, cracks, crevices, along a baseboard and behind household appliances

- **For cockroaches:** in all warm, humid or dark places favorable to a proliferation of cockroaches.
- **Fleas:** on carpets, around a pet's bed, in broom closets and all cleaning devices which have been in contact with pests.
- **For mosquitoes:** around sources of light, under beds, on curtains and mosquito nets.
- **For flies:** around windows and doors.
- **For house spiders:** in cracks and crevices and around windows.
- **For clothes and food moths:** Spray around and inside of closets, door frames, doors and drawers after removing food and clothes (wait until surface is completely dry before filling cupboard - don't put food in direct contact with treated areas).
- **Dust mites:** Apply on carpets, mattresses and other fabrics in the house and then protect with a cover. Leave undisturbed to dry for two or three hours. Perform a test on a small hidden area before treatment.
- **For bed bugs:** Spray around and under the bed and along the baseboards near the bed. After removing all drawers from furniture, the inside of the cabinetry should be sprayed as well as the bottom and sides of the drawers. The clothes in the drawers should be removed and laundered. Spray inside and around closets, door frames and doors. Spray molding at the top and bottom of the room and around windows. Spray drawers' joints, both top and bottom. Spray dressers from below and where dressers are in contact with the floor. Spray where the bed is in contact with the floor, spray chairs and underneath chairs. Spray all baseboards, loose plaster, behind bed frames and headboards, beneath beds and furniture, and the bed base and bed frames. Do not apply to furniture surfaces or mattresses where people will be laying or sitting. Product is not intended to treat infested bedding.
- **For food storage:** Spray the product on all surfaces in contact with packed foodstuffs (walls, floor, storage material, ...).

RECOMMENDED DOSE

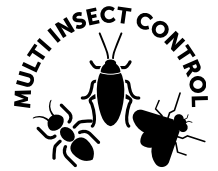
- Protection of 100m²: 25ml in 1 litre of water for application on 20m² (area actually treated).
- Specific dose for mosquito control: 5ml of product in 1 liter of water.

Residual efficacy	Day 0	+1 month	+3 months	+6 months
CRAWLING INSECTS				
German cockroach (<i>Blattella germanica</i>)	100%	100%	100%	100%
Oriental cockroach (<i>Blatta orientalis</i>)	100%	100%	100%	100%
American cockroach (<i>Periplaneta americana</i>)	100%	100%	100%	100%
Cat flea (<i>Ctenocephalides felis</i>) - larva and adult	100%	100%	100%	100%
Bed bug (<i>Cimex lectularius</i>)	100%	100%	100%	100%
Spider (<i>Tegenaria domestica</i>)	100%	100%	100%	100%
Tick (<i>Ixodes ricinus</i>)	100%	100%	100%	100%
Dust mite (<i>Dermatophagoides pteronyssinus</i>)	100%	100%	100%	100%
FLYING INSECTS				
Tiger mosquito (<i>Aedes albopictus</i>)	100%	100%	100%	100%
Tropical mosquito (<i>Aedes aegypti</i>)	100%	100%	100%	100%
House mosquito (<i>Culex quinquefasciatus</i>)	100%	100%	100%	100%
African malaria mosquito (<i>Anopheles gambiae</i>)	100%	100%	100%	100%
Stable fly (<i>Stomoxys calcitrans</i>)	100%	100%	100%	100%
Clothes moth (<i>Tineola bisselliella</i>)	100%	100%	100%	100%

Residual efficacy	Day 0	+1 month	+3 months	+6 months
PACKED FOODSTUFF INSECTS				
Flour beetle (<i>Tribolium confusum</i>)	100%	100%	100%	100%
Red flour beetle (<i>Tribolium castaneum</i>)	100%	100%	100%	100%
Flour moth (<i>Plodia interpunctella</i>)	100%	100%	100%	100%
Food moth (<i>Ephestia kuehniella</i>)	100%	100%	100%	100%
Wheat weevil (<i>Sitophilus granarius</i>)	100%	100%	100%	100%
Rice weevil (<i>Sitophilus oryzae</i>)	100%	100%	100%	100%
Lesser grain borer (<i>Rhizopertha dominica</i>)	100%	100%	100%	100%
Sawtoothed grain beetle (<i>Oryzaephilus surinamensis</i>)	100%	100%	100%	100%
Hide beetle (<i>Dermestes maculatus</i>)	100%	100%	100%	100%
Drugstore beetle (<i>Stegobium paniceum</i>)	100%	100%	100%	100%
Mealworm beetle (<i>Tenebrio molitor</i>)	100%	100%	100%	100%
Foreign grain beetle (<i>Ahasverus advena</i>)	100%	100%	100%	100%
Khapra beetle (<i>Trogoderma granarium</i>)	100%	100%	100%	100%
Cigarette beetle (<i>Lasioderma serricorne</i>)	100%	100%	100%	100%

AMP 50 TETRA 25 PBO 100 EC

POWERFUL COMBINATION OF ACTIVE INGREDIENTS AGAINST INSECT RESISTANCE



COMPOSITION

- 50g/l Acetamiprid (n°CAS 135410-20-7), 25g/l D-tetramethrin (n°CAS 1166-46-7), 100g/l Piperonyl Butoxide (n°CAS 51-03-6)

FORMULATION

- Emulsifiable concentrate (EC)

ONSET OF BIOCIDAL EFFECT

- Immediate action: knockdown effect.

BIOCIDAL PRODUCT

- Insecticide PT 18

RESIDUAL EFFECT

- Up to 3 months after application.

PRODUCT BENEFITS

- **Innovative formula with 3 combined active ingredients:**
A professional formulation combining 3 active ingredients: 2 active ingredients from different chemical families with a synergist. The formulation limits the development of resistance in many insects.
- **Complete control on different surfaces:**
The product grants complete control of a broad range of crawling and flying insects on different surfaces.
- **Curative treatment:**
Immediate fast killing and knockdown effect can be observed within minutes following the application.
- **Residual effect:**
The formulation also ensures long-lasting protection for up to 3 months.

TARGETS

- **Livestock insects:** red poultry mite (*Dermanyssus gallinae*), Small mealworm (*Alphitobius diaperinus*), flour beetle (*Tribolium confusum*), skin beetle (*Dermestes maculatus*), house fly (*Musca domestica*)
- **Flying insects:** yellow fever mosquito (*Aedes aegypti*), Asian tiger mosquito (*Aedes albopictus*), house mosquito (*Culex pipiens*), house fly (*Musca domestica*), hornet (*Vespa crabro*, *Vespa velutina*), wasp (*Vespa sp.*)
- **Crawling insects, moths and mites:** European house dust mite (*Dermatophagoides pteronyssinus*), American house dust mite (*Dermatophagoides farinae*), Mediterranean flour moth (*Ephestia kuehniella*), flour moth (*Plodia interpunctella*), cloth moth (*Tineola bisselliella*), cat flea (*Ctenocephalides felis*), house spider (*Tegeneraria domestica*), black ant (*Lasius niger*), bed bug (*Cimex lectularius*), Oriental cockroach (*Blatta orientalis*), German cockroach (*Blattella germanica*), American cockroaches (*Periplaneta americana*), scabies mite (*Sarcoptes scabiei*)



USE

- For use in materials, transport and premises in contact with packed foodstuffs of vegetal or animal origin. For use in animal housing, materials and transport (farm hygiene).

STORAGE

- Store between 5°C and 35°C. Protect from cold and frost.

INSTRUCTIONS FOR USE

■ Control of dark litter beetles (curative and residual treatment):

Proceed in 2 steps in buildings that have been previously cleaned and before temperatures rise.

1) Before mulching, apply the product on the perimeter of the building, and on doors, windows, cracks and crevices.

2) After mulching, spray the product at the bottom of the feeders and on the bedding that is on the wall edge by applying a 1-meter high band.

■ Control of red poultry mites (curative and residual treatment):

Apply in buildings that have been previously cleaned and disinfected, and before setting up the litter. Focus on cracks and hard-to-reach areas.

■ Control of flies (curative treatment):

Apply on surfaces in clear and bright areas (“favoring zones”) where flies usually stay and on the perimeter of doors and windows. Wait until the surfaces are dry (about 12h to 24h) and ventilate the treated area for a minimum of 1 hour before introducing the animals back onto the premises.

■ Control of insects in stored foodstuffs (packed):

Apply the product on all surfaces in contact with stored foodstuffs (walls, floors, racks, etc.).

RECOMMENDED DOSE

■ Curative treatment or light infestation:

Dilute 100ml in 5 liters of water for application on 100m².

■ Long lasting treatment or strong infestation:

Dilute 200ml in 5 liters of water for application on 100m².

AMP 50 + TETRA 25 + PBO 100 EC	Time for 100% control on different surfaces							
	Ceramic tiles		Plastic		Wood		Cotton fabric	
	+3 months	+6 months	+3 months	+6 months	+3 months	+6 months	T+90	T+180
House mosquito (<i>Culex pipiens</i>)	<1h	< 24h	<1h	< 24h	<1h	< 24h	<1h	< 24h
Tropical mosquito (<i>Aedes aegypti</i>)	<1h	< 24h	<1h	< 24h	<1h	< 24h	<1h	< 24h
Tiger mosquito (<i>Aedes albopictus</i>)	<1h	< 24h	<1h	< 24h	<1h	< 24h	<1h	< 24h
Wasp (<i>Vespa sp.</i>)	<1h	< 24h	<1h	< 24h	<2h	< 24h	<2h	< 24h
Hornet (<i>Vespa crabro</i>)	<1h	< 24h	<1h	< 24h	<1h	< 24h	<2h	< 24h
European house dust mite (<i>Dermatophagoides pteronyssinus</i>)	<1h	< 24h	<1h	< 24h	<1h	< 24h	<1h	< 24h
American house dust mite (<i>Dermatophagoides farinae</i>)	<1h	< 24h	<1h	< 24h	<1h	< 24h	<1h	< 24h
Food moth (<i>Ephesia kuehniella</i>)	<1h	< 24h	<1h	< 24h	<1h	< 24h	<1h	< 24h
Cloth moth (<i>Tineola bisselliella</i>)	<1h	< 24h	<1h	< 24h	<1h	< 24h	<1h	< 24h
Flea adults (<i>Ctenocephalides felis</i>)	<1h	< 24h	<1h	< 24h	<4h	< 24h	<2h	< 24h
Flea larvae (<i>Ctenocephalides felis</i>)	<1h	< 24h	<1h	< 24h	<2h	< 24h	<2h	< 24h
House spider (<i>Tegenaria domestica</i>)	<1h	< 24h	<1h	< 24h	<8h	< 120h	<8h	< 96h
Black ant (<i>Lasius niger</i>)	<1h	< 24h	<1h	< 24h	<2h	< 24h	<1h	< 24h
Bed bug (<i>Cimex lectularius</i>)	<1h	< 24h	<1h	< 24h	<4h	< 72h	<4h	< 48h

AMP 20 RB

READY GEL BAIT WITH THE BEST PALATABILITY, SPECIALLY DESIGNED FOR THE PROFESSIONAL MARKET



COMPOSITION

- Acetamiprid: 20 g/kg (n°CAS 135410-20-7)
Contains a bittering agent (denatonium benzoate.)

FORMULATION

- RB (ready bait gel)

RESIDUAL EFFECT

- Does not dry, does not stain and remains palatable for up to 4 weeks.

BIOCIDE PRODUCT

- Insecticide PT 18

ONSET OF BIOCIDAL EFFECT

- Lethal effect appears in the following hours after the ingestion. The insects will not die immediately: they eat the gel, go back to the nest and contaminate the rest of the population by eating contaminated corpses or feces.

PRODUCT BENEFITS

- **BPR submitted formulation:**
Secured sales until at least 2027.
- **Combination of palatable ingredients:**
Unique mix of palatable ingredients to cover the food preferences of all common household roaches.
- **Colony control – chain effect:**
Slow-acting active ingredient allows contaminated roaches to return to their harborage site for unmatched cascade effect.
- **Targeted cockroach control:**
Very stable, does not stain, does not dry, can be applied on any kind of surface. Resists high temperatures and high humidity (is applied in sewages).
- **Long-lasting effect:**
Long-lasting properties with efficacy for up to 3 months.

TARGETS

- Oriental cockroach (*Blatta orientalis*), German cockroach (*Blattella germanica*), American cockroach (*Periplaneta americana*), silverfish (*Lepisma saccharina*)



INSTRUCTIONS FOR USE

AMP 20 RB contains acetamiprid, an active substance that acts by ingestion and by contact. Acetamiprid acts on the central nervous system of insects, causing paralysis and death quickly after consuming the gel. The slight delay in mortality caused by the active ingredient enables the cockroaches - who have fed on the gel - sufficient time to return to their harborage.

In said harborage, by eating contaminated corpses or feces, the formulation can be transferred from one cockroach to another, contributing to reduced infestation levels.

■ Apply at insect's preferred location (and unreachable to humans and pets):

- Under the fridge.
- Under the kitchen sink.
- Under the oven and the water heater.
- On all cracks and crevices that can be a harborage for cockroaches.

■ Preventive treatment:

Kitchen, food storage: 2 to 3 drops per m²

Bathroom: 1 to 2 drops per m²

Other rooms: 1 to 2 drops per 10-15m²

■ Curative treatment:

Kitchen, food storage: 4 to 6 drops per m²

Bathroom: 2 to 4 drops per m²

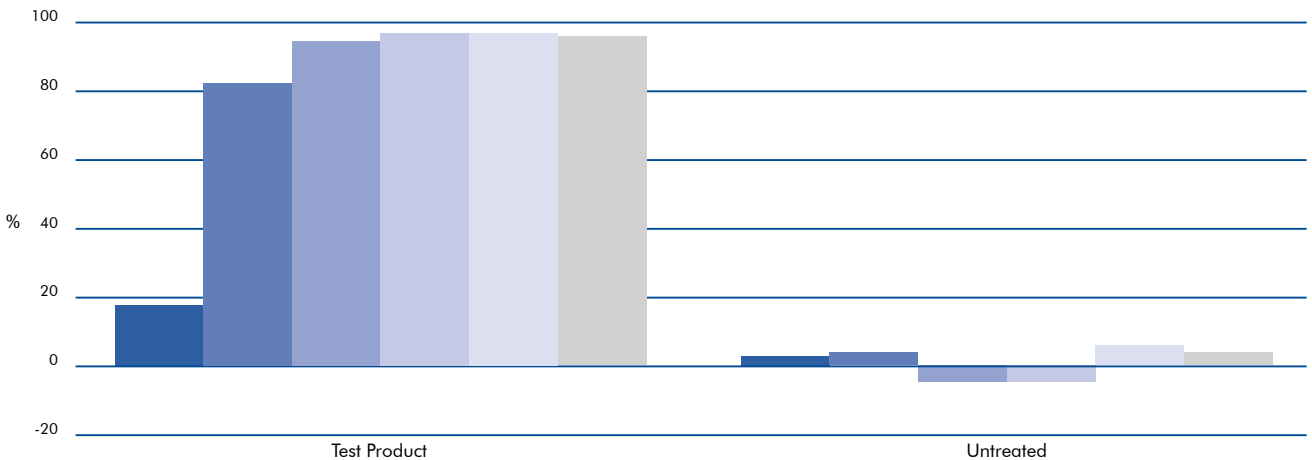
Other rooms: 2 to 4 drops per 10-15m²

RECOMMENDED DOSE

- Maintenance: 1 drop of 0.03g (lentil size) per spot application zone.
- Light: 2-5 drops of 0.03g (lentil size) per spot application zone.
- Heavy: 6-10 drops of 0.03g (lentil size) per spot application zone.

Field test: Percentage of reduction of cockroach population after treatment

■ 1 day ■ 7 days ■ 14 days ■ 28 days ■ 56 days ■ 84 days



AMP 1 RB

A READY-TO-USE INSECTICIDAL GEL FOR ANT CONTROL



COMPOSITION

- Acetamidrid: 1g/kg (n°CAS 135410-20-7)
Contains a bittering agent (denatonium benzoate.)

FORMULATION

- RB (ready bait gel)

RESIDUAL EFFECT

- Protection up to 4 weeks.

BIOCIDAL PRODUCT

- Insecticide PT 18

ONSET OF BIOCIDAL EFFECT

- Lethal effect appears in the following hours after the ingestion. The insects will not die immediately: they eat the gel, go back to the nest, and contaminate the rest of the population during food sharing.

PRODUCT BENEFITS

- **BPR submitted formulation:**
Secured sales until at least 2027.
- **Full infestation control:**
Kills the entire colony incl. queen, larvae and workers of all common household ants.
- **Excellent palatability:**
Combination of natural food sources (fructose- and water-based gel) is highly appealing for ants.
- **Effective chain effect:**
Slow killing properties of the active ingredient allow ants to spread the bait throughout entire colony (mouth-to-mouth-feeding via "social stomach").
- **Top customers in Europe:**
Have been trusting our formulation for 15 years.

TARGETS

- Black ant (*Lasius Niger*), Argentine ant (*Linepithema humile*), pavement ant (*Tetramorium caespitum*), erratic ant (*Tapinoma erraticum*)



INSTRUCTIONS FOR USE

BOX APPLICATION

■ Indoors:

On the ants' pathway, place 5 drops of 0.1g per application zone area at regular and appropriate distances and in areas not accessible to children and animals. Do not place the product under a radiator.

■ Outdoors:

Around the nest: place 2 to 4 drops of 0.5g in front of entrances of nest or tunnel entries and in areas not accessible to children and animals. Place the drops on hard surfaces (for instance: ceramic tiles). Protect the treated area from rain/water and direct sunlight, for example by using a tile.

Lethal effect appears in the following hours after the ingestion. The insects will not die immediately: they eat the gel, go back to the nest, and contaminate the rest of the population during food sharing.

DROPLET APPLICATION

■ Indoors:

On ants' route, place 5 drops of 0.1g (size of a lentil) at regular intervals (2 to 5cm), with a maximum of 20 drops per 10m² room. Replace the consumed gel up to the complete control of the infestation.

■ Outdoors:

Around the nest: place 2 to 4 spots of 0.5g (size of a green pea) in front of entrance tunnels or nest entries.

AMP 1 RB	after 7 days	after 14 days	after 28 days
Black ant (<i>Lasius niger</i>)	93%*	98%*	100%
Argentine ant (<i>Linepithema humile</i>)	61%*	85%	100%
Pavement ant (<i>Tetramorium caespitum</i>)	83%*	100%*	100%
Erratic ant (<i>Tapinoma erraticum</i>)	91%*	100%*	100%

* Control of Population - field tests

DMA 57 RB

A DIFFERENT MODE OF ACTION FOR FULL ANT INFESTATION CONTROL



COMPOSITION

- 57.5g/kg of sodium cacodylate (CAS N° 124-65-2)
Contains a bittering agent (denatonium benzoate.)

FORMULATION

- RB (ready bait gel)

RESIDUAL EFFECT

- Protection for up to 4 weeks in indoor or sheltered areas. Destruction of the nest in 2-3 weeks.

BIOCIDAL PRODUCT

- Insecticide PT 18

ONSET OF BIOCIDAL EFFECT

- Lethal effect appears in the following hours after the ingestion. The insects will not die immediately: they eat the gel, go back to the nest, and contaminate the rest of the population during food sharing.

PRODUCT BENEFITS

- **Complete control:**
Exploits the natural feeding behavior of ants for rapid colony control and ants' nest destruction. Protection for up to 4 weeks, destruction of the nest within 2 weeks.
- **Effective chain effect:**
Slow killing properties of the active ingredient allow ants to spread the bait throughout entire colony (mouth-to-mouth-feeding via "social stomach").
- **Coverage of all food preferences:**
Works on a wide range of ant genera and species either seeking protein or carbohydrate-based food.
- **Very palatable formulation:**
Gel is hygroscopic (does not dry out) providing a water source for ants (especially in dry season), which keeps the freshness of the bait for up to 4 weeks.
- **A different mode of action:**
Acts in a physical way by dehydrating the body of the insect. Ensures a different mode of action in comparison with the most common active ingredients. Reduces the risk of resistance.



TARGETS

- Black ant (*Lasius Niger*), pharaoh ant (*Monomorium pharaonis*), pavement ant (*Tetramorium caspium*), erratic ant (*Tapinoma erraticum*), *Monomorium clavicorne*

INSTRUCTIONS FOR USE

BOX APPLICATION

Indoors:

On the ants' pathway, place 5 drops of 0.1g per application zone at regular and appropriate distances and in areas not accessible to children and animals. Do not place the product under a radiator.

Outdoors:

Around the nest: place 2 to 4 drops of 0.5g in front of entrances of nests or tunnel entries and in areas not accessible to children and animals. Place the drops on hard surfaces (e.g., ceramic tiles). Protect the treated area from rain/water and direct sunlight, for example by using a tile.

Lethal effect appears in the following hours after the ingestion. The insects will not die immediately: they eat the gel, go back to the nest, and contaminate the rest of the population during food sharing.

DORPLET APPLICATION

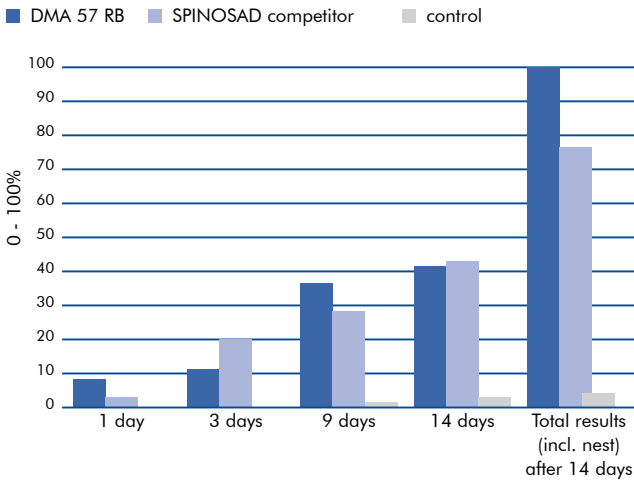
Indoors:

On the ants' route place 5 drops of 0.1g per spot application zone with a maximum of 20 drops per 10m² room.

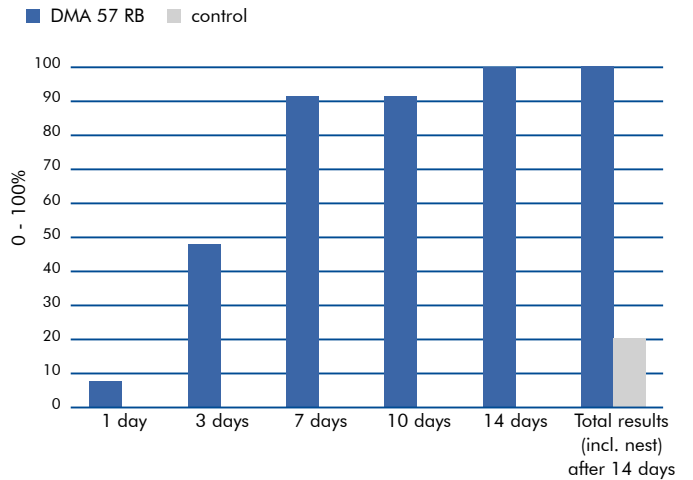
Outdoors:

Around the nest: place 2 to 4 spots of 0.5g (size of a green pea) in front of entrance tunnels or nest entries.

Laboratory assessment of black ants nest destruction



Laboratory assessment of pharaoh ants nest destruction



AMP 2 MG

READY-TO-USE MICRO GRANULES FOR CRAWLING INSECT CONTROL



COMPOSITION

- Acetamiprid: 2g/kg (n°CAS 135410-20-7)
Contains a bittering agent (denatonium benzoate.)

FORMULATION

- MG (micro granules)

RESIDUAL EFFECT

- Protection for up to 3 months in indoor or sheltered areas. Destruction of the nest in 2 weeks.

BIOCIDAL PRODUCT

- Insecticide PT 18

ONSET OF BIOCIDAL EFFECT

- Lethal effect appears in the following hours after the ingestion. The insects will not die immediately: they eat the granules, go back to the nest, and contaminate the rest of the population during food sharing.

PRODUCT BENEFITS

- **BPR submitted formulation:**
Secured sales until at least 2027.
- **Safe use - very low dust emission:**
Microgranular technology without dust emission, strong alternative to powders.
- **High performing formulation:**
Contamination of ants and roaches via contact (static properties of microgranules) and ingestion (natural grooming behavior of insects).
- **High palatability:**
Sugar-based formulation helps to attract the crawling insects on the bait.
- **Effective chain effect:**
Slow killing properties of the active ingredient allow ants to spread the bait throughout entire colony (mouth-to-mouth-feeding via "social stomach").
- **Flexible application:**
Application by scattering, watering or spraying for indoor and outdoor use.

TARGETS

- Black ant (*Lasius niger*), German cockroach (*Blattella germanica*), American cockroach (*Periplaneta americana*), Silverfish (*Lepisma saccharinea*)



INSTRUCTIONS FOR USE

■ For indoor use and around buildings:

Apply on 1/4 of the surface to protect (for example 3m² to protect 12m²) on the ant's path and/or along walls and/or in cracks and crevices.

Scattering Scatter a fine layer at a rate of 20g/m².

Spraying Mix with water at a rate of 100g/l.

Spray 1l per 5m².

Watering (only around buildings) Mix 20g in 1l of water and use 1l per m².

■ For outdoor use:

Ants nest treatment

Apply the product on and around the nest.

Small nest (Treated surface: 1m²)

Scattering: Scatter 20g per nest.

Spraying: Mix 20g with 200ml of water. in a sprayer.

Watering: Mix 20g in 1l of water.

Small nest (Treated surface: 1m²)

Scattering: Scatter 40g per nest.

Spraying: Mix 40g with 400ml with water in a sprayer.

Watering: Mix 40g in 2l of water.

RECOMMENDED DOSE

■ Scattering:

Fine layer at a rate of 20g/m².

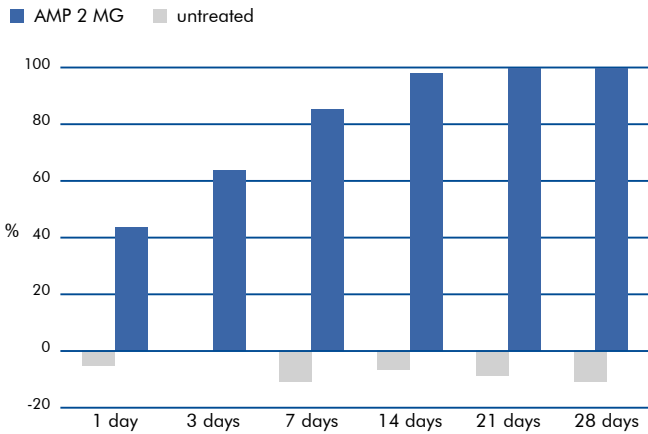
■ Spray:

Mix 100g with 1l of water.

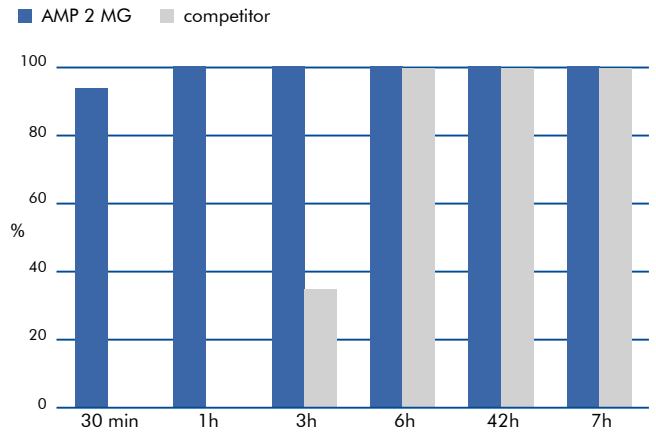
■ Watering:

Mix 20g in 1l of water (1l per m²), of water (1l per m²) for ant nest control – only for outdoor use.

Field test : Percentage of mortality of Lasius niger nest



Laboratory test : Percentage mortality of Lasius niger



AMP 100 SG

FLY CONTROL IN ALL KINDS OF SENSITIVE BREEDING AREAS



COMPOSITION

- Acetamidrid: 100g/kg (n°CAS 135410-20-7)
Contains a bittering agent (denatonium benzoate.)

FORMULATION

- SG (Soluble granules)

RESIDUAL EFFECT

- Protection for up to 3 months.

BIOCIDAL PRODUCT

- Insecticide PT 18

ONSET OF BIOCIDAL EFFECT

- In the hours following the application.

PRODUCT BENEFITS

- **BPR submitted formulation:**
Secured sales until at least 2027.
- **Fast and easy application:**
Formulation in wettable microgranules suitable for spray application (ideal for areas that are usually difficult to reach) or targeted brush application.
- **Triple attractive action:**
Special blend of 2 attractive ingredients, effective even in a large area full of stimuli (animals, feed, manure, etc.).
- **Low toxicity against non-target insect:**
Acetamidrid is 2000 to 4000 times less toxic to bees than other commonly used insecticides.
- **Long-lasting protection:**
The treated area remains protected for up to 3 months. Protection for the entire fly season (spring – summer).



TARGETS

- House fly (*Musca domestica*), stable fly (*Stomoxys calcitrans*)

INSTRUCTIONS FOR USE

Use AMP 100 SG suspension on the day of mixing, preferably immediately after preparation. Apply in locations not accessible to children, pets, domestic animals or wildlife, and only on surfaces not routinely contacted by livestock or amateurs.

■ Painting for adult fly control:

Mix 250g of product thoroughly in 160ml of water to protect a ground surface building of 100m². For optimal protection, apply the paste using a brush or roller by splitting it into 25 to 30 panels (20x20cm or 30x10cm) on preferred resting areas of flies (preferably on right areas and clear surfaces).

■ Spraying for adult fly control:

Mix 250g of product thoroughly in 2.5l of water to protect a ground surface building of 100m². Using a low-pressure sprayer, distribute the preparation by covering a total area of 1/3 of surfaces where flies congregate, such as windowsills/frames, door frames, warm wall areas and near animal pens. Where insufficient surface area is available for an application out of reach of the animals, cardboard/wooden paint strips (10cm x 30cm) can be hung from the ceiling.

■ How to act in case of porous surfaces?

Before applying AMP 100 SG, apply a white base coating. After drying, apply water on the treated surface so that the wall absorbs less product.

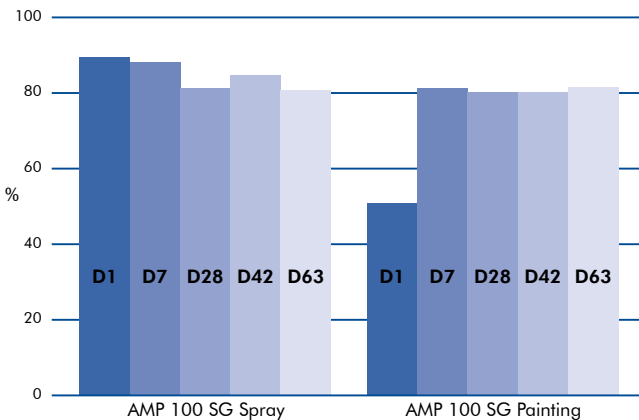
■ Special indications on the size of the drops in the case of spray application?

Use a low-pressure backpack pump with the nozzle adjusted to medium sized drops to avoid dispersion of the product in the environment.

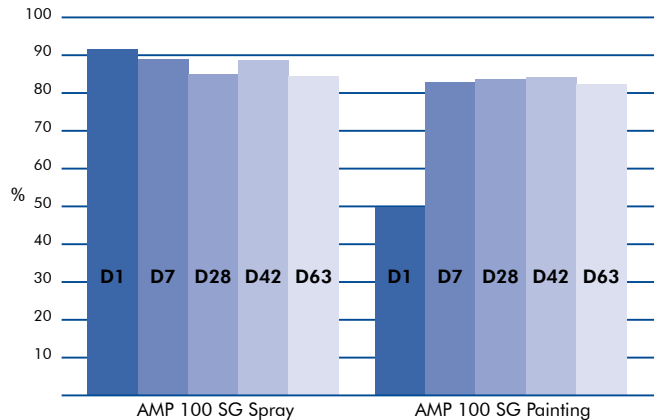
RECOMMENDED DOSE

- For the protection of a 100m² building (ground floor):
 Painting 200g in 200ml of water
 Spraying 200g in 1.5l of water to protect 100m²

Musca domestica

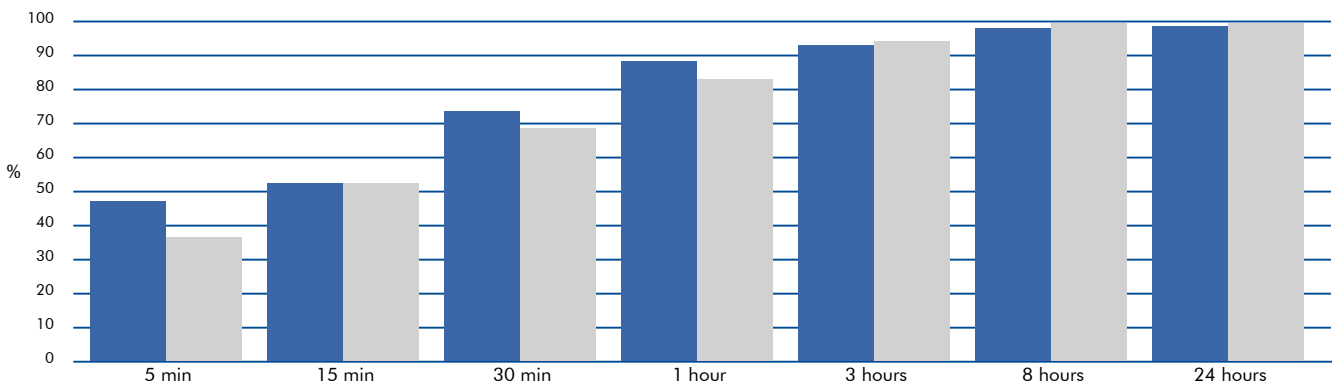


Stomoxys calcitrans



Mortality: test in simulated conditions (30m³ room) against Musca domestica, AMP 100SG applied by painting

■ AMP 100 SG ■ Market leader



AMP 5 GB



READY-TO-USE-GRANULAR BAIT FOR EASY TREATMENT FOR FLIES

COMPOSITION

- Acetamiprid: 5g/kg (n°CAS 135410-20-7)
Contains a bittering agent (denatonium benzoate.)

FORMULATION

- GB (Granular bait).

RESIDUAL EFFECT

- Protection for up to 3 months.

BIOCIDE PRODUCT

- Insecticide PT 18

ONSET OF BIOCIDAL EFFECT

- In the hours following the application.

PRODUCT BENEFITS

- **BPR submitted formulation:**
Secured sales until at least 2027.
- **High performance:**
Professional product for fly control
 - Contains 3 attractants for flies: Sugar, Cheese and Sexual Pheromone (Z-9-Tricosene).
 - Powerful formulation designed for animal health segment (blow fly control) ensures fast killing effect and full control.
- **Easy-to-use:**
Ready-to-use bait, fast application by scattering the granules in the places where flies stay, eat or travel.
- **Long-lasting protection:**
The bait remains active for up to 3 months. Protection for the entire fly season (spring – summer).



TARGETS

- House fly (*Musca domestica*), blow fly (*Calliphoridae* sp.)

INSTRUCTIONS FOR USE

Scatter the granules into a non-absorbent cup, without build-up and ensuring an even spread of product to create a bait station. Place the bait station in areas where flies live, feed and pass by. Focus on light, bright and draft-free areas (near windows, doors, areas with water or animal droppings, etc.).

In hot and dry periods, it is advisable to moisten the granules with water to increase the attractiveness of the product.

■ Where to apply AMP 5 GB?

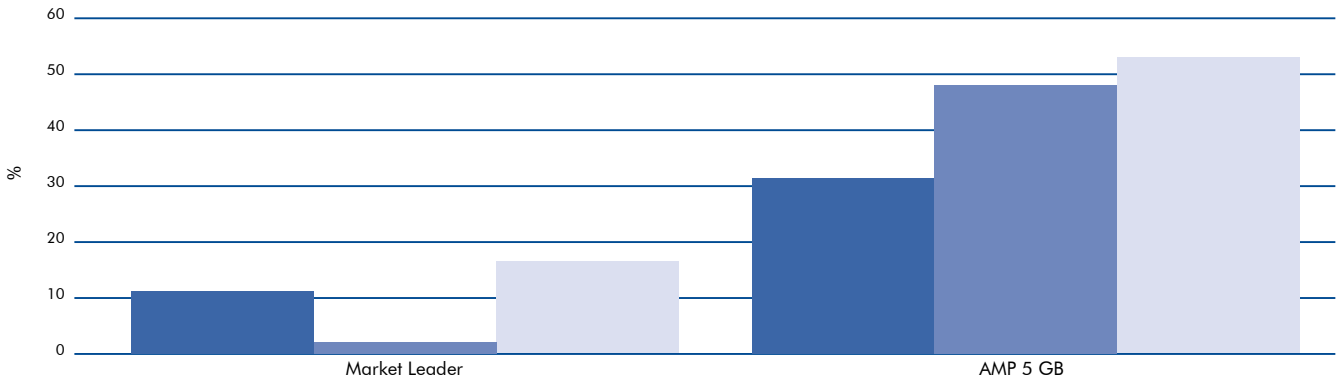
The height the product is placed on does not affect its performance.

RECOMMENDED DOSE

- To protect 100m²: Apply 10 bait spots of 25g.

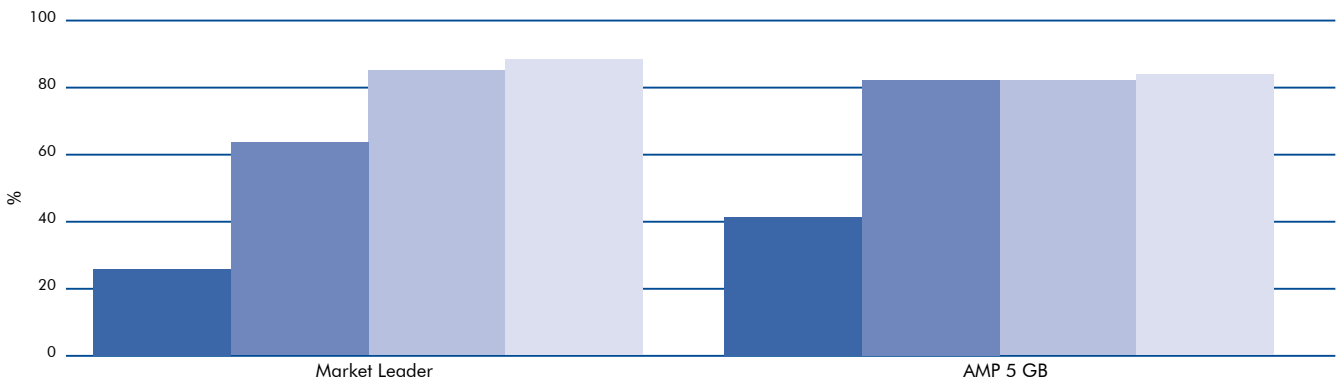
Attractiveness

■ 30 min ■ 60 min ■ 180 min



Mortality

■ 30 min ■ 3 hours ■ 8 hours ■ 24 hours



OUR PRESENCE



England



France

Spain





In-house biologicals



Plant protection



Biocides



Tolling

Germany



Austria



Hungary



Romania



Italy



KWIZDA AGRO GMBH

Universitätsring 6
1010 Vienna

Kwizda

Agro | Biocides

WWW.KWIZDA-BIOCIDES.COM

Use biocides safely. Always read the label and product information before use.